

Walled City Partnership
Delivering Heritage-led Regeneration

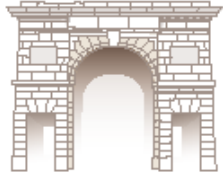
Foyle Family History Society

Rescuing Our Built Heritage

Ronan O'Donnell
Project Officer
Walled City Partnership

14th September 2015
Central Library





Walled City Partnership
Delivering Heritage-led Regeneration

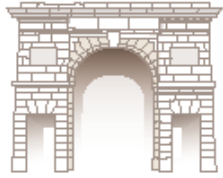
Shipquay Street Circa 1900

Townscape Heritage Initiative

Grant aid programme for the repair and regeneration of the historic environment in towns and cities throughout the UK

Supported by the
Heritage Lottery Fund

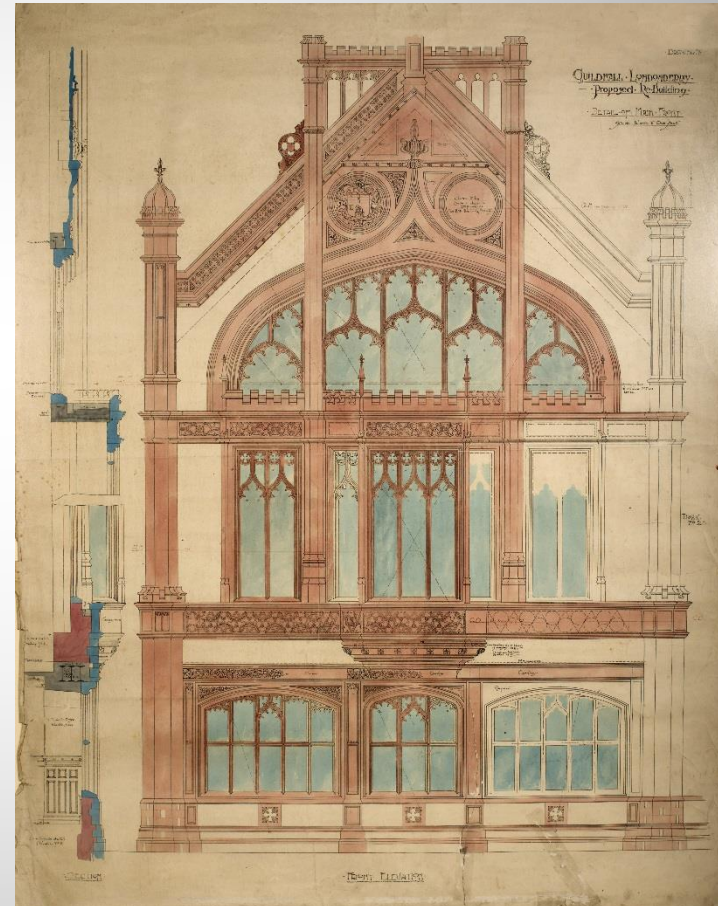




Walled City Partnership
Delivering Heritage-led Regeneration



The Guildhall 1903 & 1911





The Diamond Circa 1915

What is our Townscape Heritage?

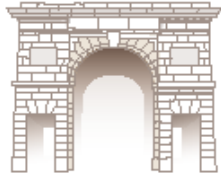
“The environment that
forms the special
architectural character of
historic urban areas”

Buildings

Open Spaces

Street Patterns





Walled City Partnership
Delivering Heritage-led Regeneration

Street Patterns & Open Spaces



Map 9. 'The Plan of the cite of Londondria', 1622, by Thomas Raven (Public Record Office Northern Ireland); original scale 200 perches to an inch (1:20,400), enlarged by approximately four fifths (Raven 2).

Irish Historic Towns Atlas

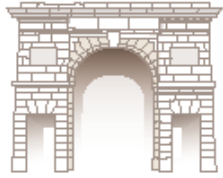


Map 17. 'City and suburbs of Londondria with the Water-side', 1799, by Robert Porter; original scale 70 perches to an inch (1:17,640), enlarged by approximately one fifth (Porter).

Irish Historic Towns Atlas

Thomas Raven 1622

Robert Porter 1799

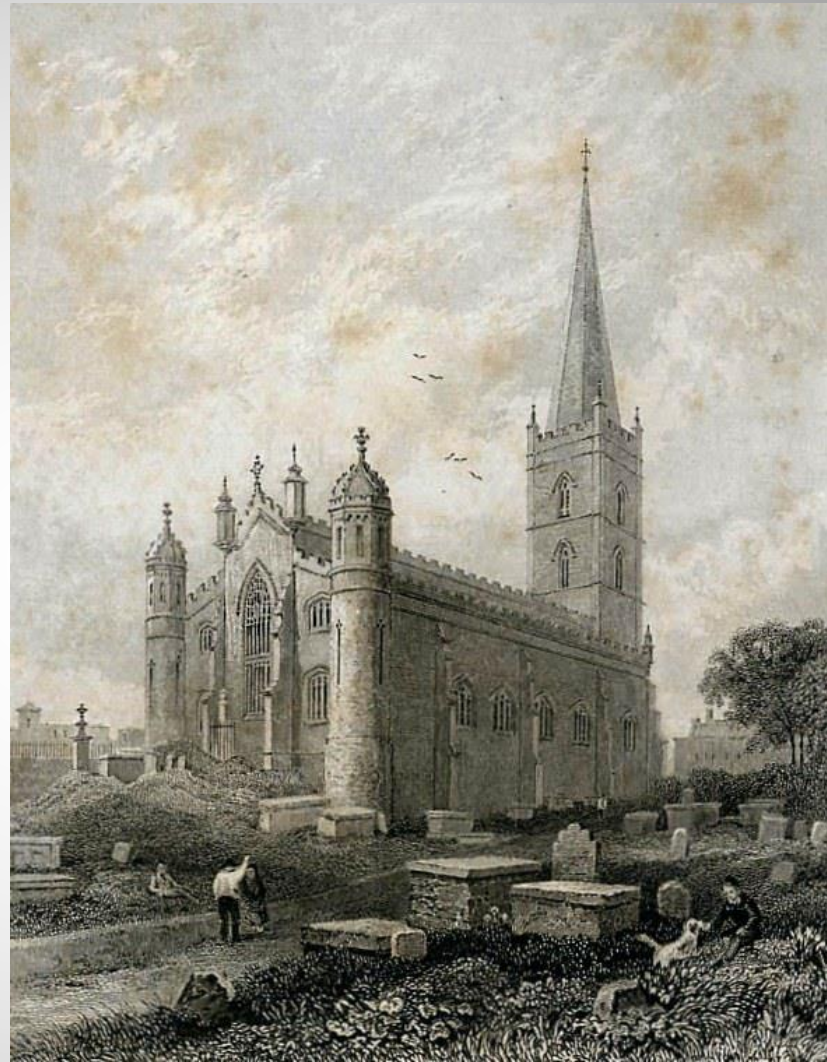


Walled City Partnership
Delivering Heritage-led Regeneration

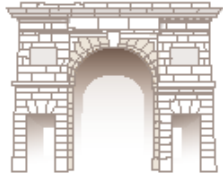
St Columbs Cathedral



Circa 1781



Circa 1842



Walled City Partnership
Delivering Heritage-led Regeneration

Waterloo Place Circa 1903?

Why conserve our Townscape Heritage?

Architectural Incentives

Architectural Interest

Rarity and Uniqueness

Offering Beyond Walls

Historical Association





Historical Association



Amelia Earhart



Northern Counties Hotel circa 1910



Strand Road Circa 1910

Why conserve our Townscape Heritage?

Economic Incentives

Sustainable use of
existing buildings

Value of tourism – DoE
*“Heritage visitors stay
longer and spend more”*





Corporation Hall circa 1890

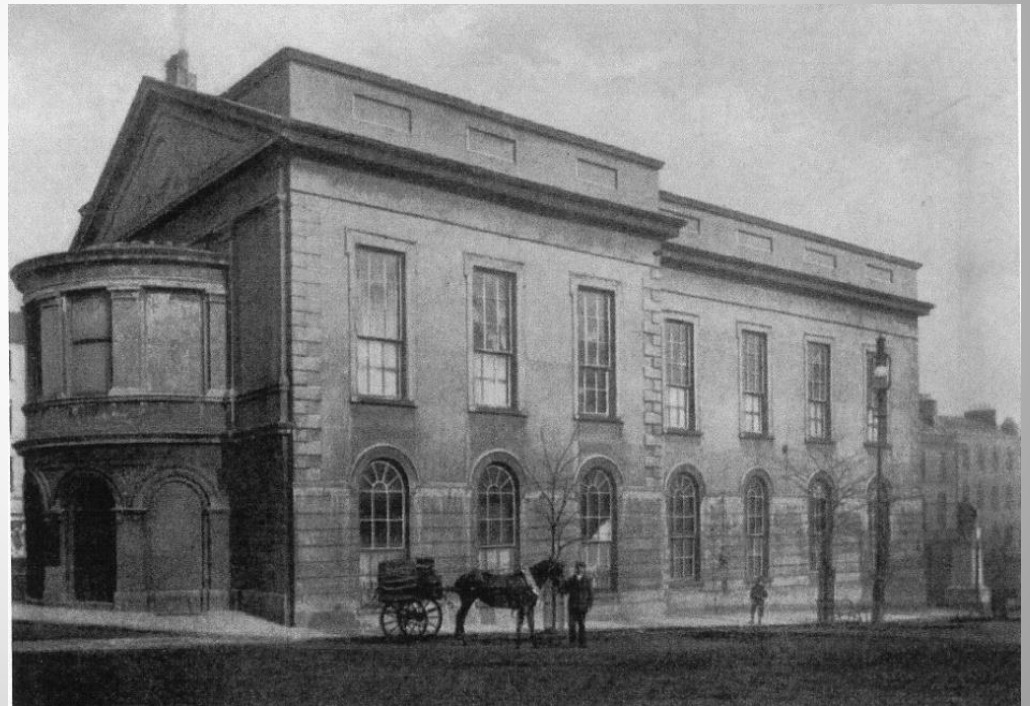
Why conserve our Townscape Heritage?

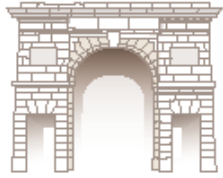
Social Incentives

Increased civic pride

Retain and reinforce a
sense of place

The environment

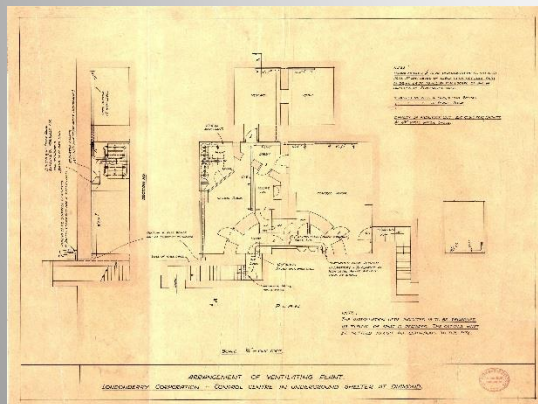




Walled City Partnership
Delivering Heritage-led Regeneration

Corporation Hall circa 1890

Underground Bunker Future Heritage?





Waterloo Street circa 1902

The Environment

Every existing building
has embodied energy?

Re-use heritage to
reduce waste/Carbon
Footprint

Only 4% of waste from
demolition is currently
recycled

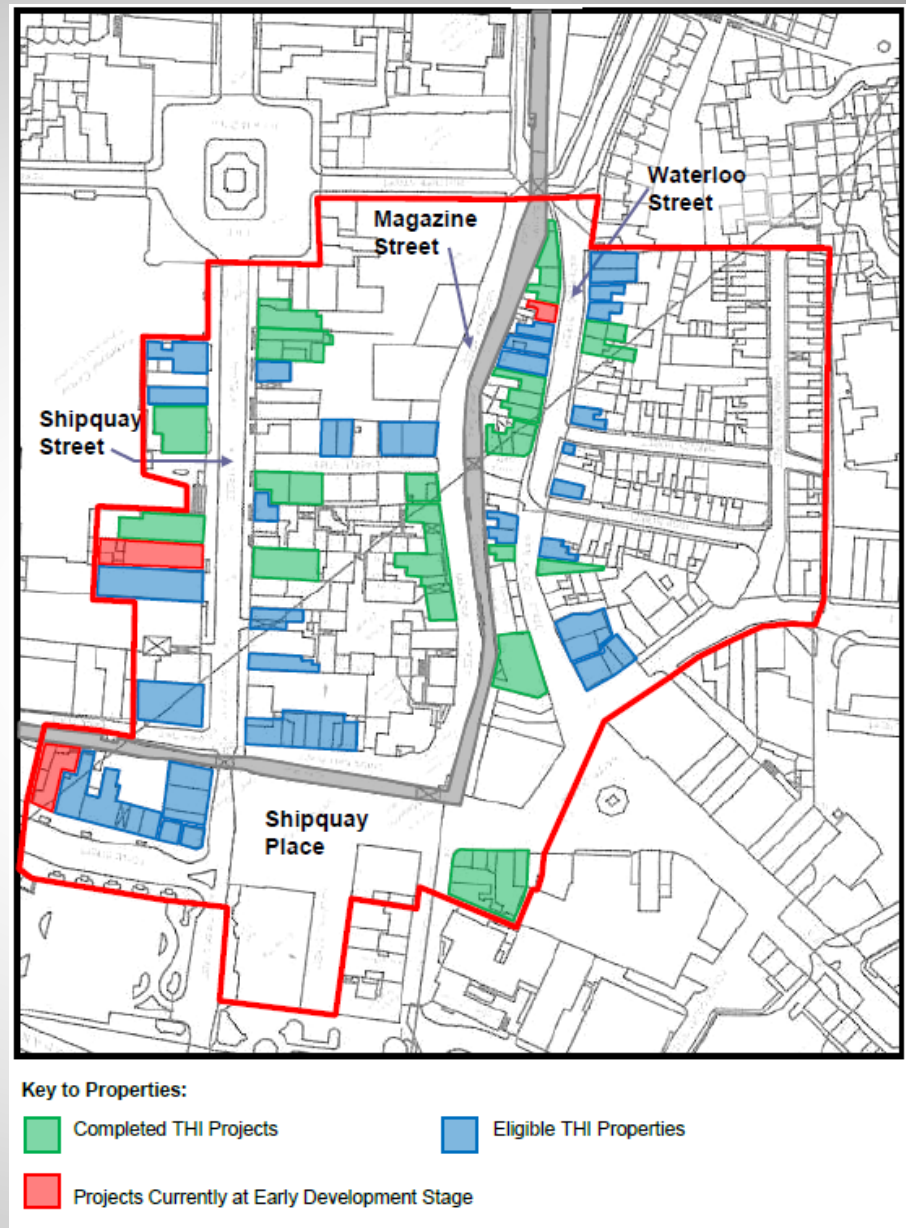




Where the THI Operates: Delivery Area;

- Historic City Conservation Area
- Defined area encompassing commercial & residential use
- Restricted area to heighten impact of investment
- Key properties targeted to preserve & enhance the character of the area

Goal is to create a vibrant and prosperous area in which to work & live





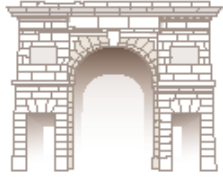
Phase I Townscape Heritage Initiative: Finances;

- HLF - £1,000,000
- Partner Funding £1.4 million
(DSD, DoE, NIEA, NIHE)
- Prop Owners £2.15 million
- Overall Investment
£4.5 million
- DCC – Project Core Costs

Output / Delivery;

- 22 No Apartments
- 19 No Retail Units
- 1,400 sq m Office Space





Walled City Partnership
Delivering Heritage-led Regeneration

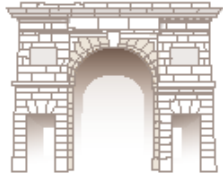
Phase II Townscape Heritage Initiative: Finances;

- HLF - £750,000 (to date)
- Public Funding £750,000 (DSD, DoE, NIEA)
- Prop Owners £1.96 million
- Overall Investment £3.29 million
- DCC – Project Core Costs

Output / Delivery;

- 13 No Retail Units
- 8 No New Apartments
- 13 No Existing Apts upgraded
- 350 sq m Office Space
- Boutique Hotel & Dance Studio





Walled City Partnership
Delivering Heritage-led Regeneration

Sources of Information

**Ulster Architectural
Heritage Society**

**City of Derry
Gazetteers**

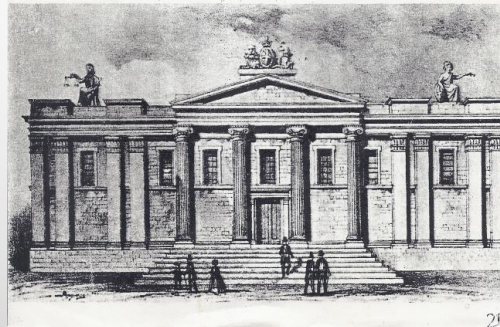
www.uahs.org.uk

ULSTER ARCHITECTURAL HERITAGE SOCIETY

HISTORIC BUILDINGS
GROUPS OF BUILDINGS
AREAS OF ARCHITECTURAL IMPORTANCE

IN AND NEAR THE

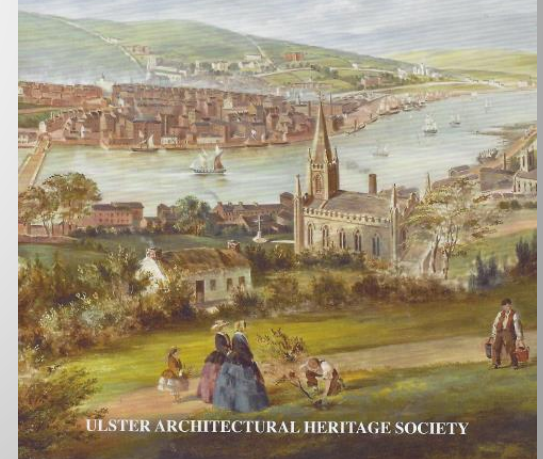
CITY OF DERRY



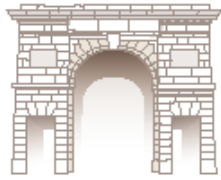
CITY OF DERRY

*An Historical Gazetteer to the
Buildings of Londonderry*

Daniel Calley



ULSTER ARCHITECTURAL HERITAGE SOCIETY



Walled City Partnership
Delivering Heritage-led Regeneration

Sources of Information



Living City Project

**Walled City Property
Reference Guide**

www.foylecivictrust.org

Foyle Civic Trust Living City Project 2	15-16 Pump Street Map Reference P19
	Address 10-16 Pump Street Name Convent of Mercy Map Reference P19 Plot Number 78.79 Listed Building Reference yes Grade HB0119067 Conservation Area Reference yes Historic city Building at Risk Reference no Date of Construction late-18th century Original Use hotel/convent Present Use vacant

Description
Formerly two properties, later under single ownership and used as a convent. Lower section, three-storey plus basement, seven-bay, mid-terrace building set back from the edge of the pavement with painted brick facade above painted smooth rendered basement and natural slate double-pitched roof. Square-headed brick arches to window openings, all with painted render reveals, painted stone sill and six-over-six vertical sliding sash painted timber windows. Wide semi-elliptical brick arch headed door opening centrally positioned on facade. Finely detailed fanlight above cornice, dentil moulding and entablature supported by two fluted columns and two fluted pilasters set into the reveal of the opening. Six-pane raised and fielded painted timber door, with three-pane painted timber side panels either side. Stone steps and flagged landing. Steps down to basement set behind dwarf wall with painted decorative cast iron railings, gate and remnants of decorative cast iron arch.

Upper section, four-storey plus basement, four-bay, mid-terrace building set back from the edge of the pavement with painted brick facade above painted smooth rendered basement and natural slate double-pitched roof. String course at first floor window sill level and painted smooth rendered band above third floor windows below eaves. Square-headed brick arches to window openings, all with painted rendered reveals. Six-over-six vertical sliding sash painted timber windows at ground, first and second floors, three-over-three at third floor. No entrance door. Steps down to basement set behind dwarf wall with painted decorative cast iron railings and gate.

Before 1800. Formerly a group (two?) of several separate buildings, two (one?) of which were the original offices of the Londonderry Sentinel and Londonderry Standard (?). They consist in the main of three-storey red-brick (now colour washed) austere Georgian facades, with an interesting main entrance with fanlight and flanking columns. Became a convent in 1848.
Historic Buildings in and near the City of Derry, Ulster Architectural Heritage Society, 1970

History
The lower seven-bay building, nos. 10-14 was built before 1800 as the King's Arms Hotel, then sometimes referred to as the County Hotel and paid for by private subscription. A carriage arch was located in the far right-hand bay where there is now a door. It was still operating as a hotel in 1839, then owned and/or managed by a David Birch. At the invitation of the Bishop of Derry, Most Reverend Edward McCorr, Mother Mary Ann Doyle, Convent of Mercy, Tulamore, County Offaly, founded the first Convent of Mercy in the doocse at Pump Street, Derry City on July 21, 1848. The Bishop of Derry gifted the former hotel building and its rear outcottage to Catherine Macaulay's Sisters of Mercy. The

1

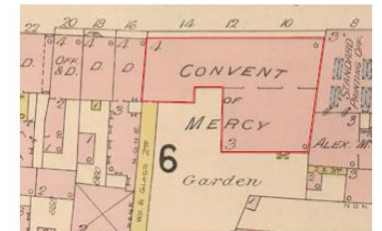
Archive Images



Convent of Mercy, 10-12 Pump Street, circa 1978



4-6 Pump Street, Ordnance Survey, 1873

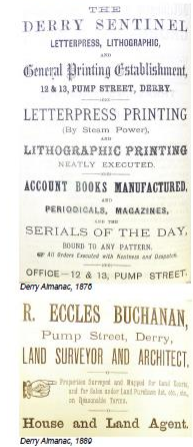


4-6 Pump Street, Valuation Map, 1899

1

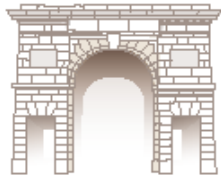
Foyle Civic Trust
Living City Project 2

Archive Images



Derry Almanac, 1860

1

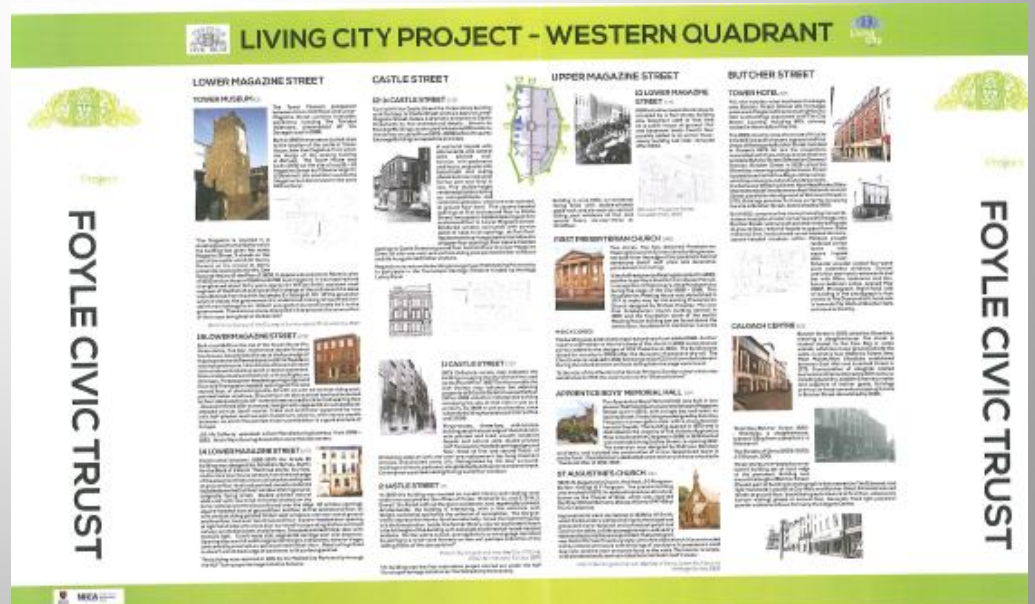
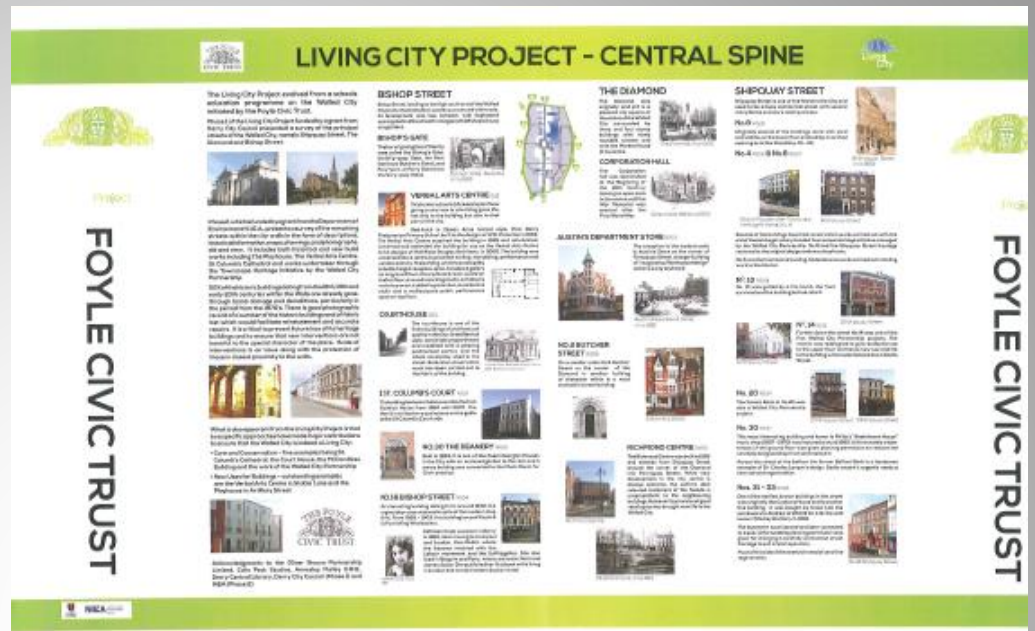


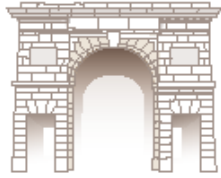
Walled City Partnership
Delivering Heritage-led Regeneration

Sources of Information



Living City Project
Walled City Exhibition
www.foylecivictrust.org





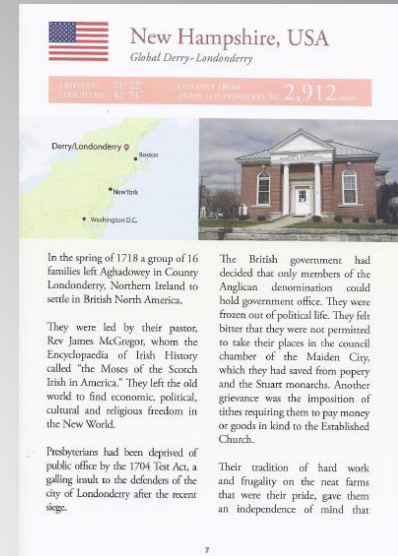
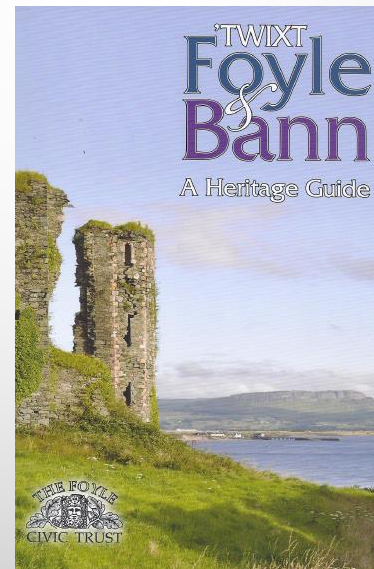
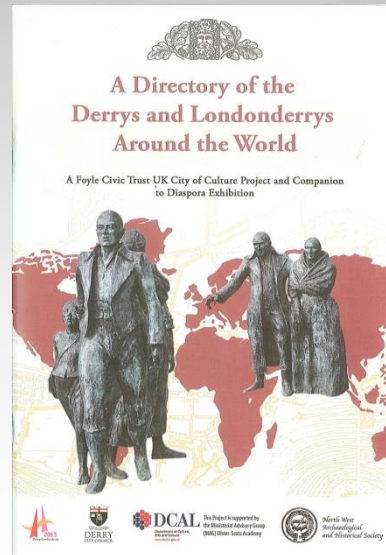
Walled City Partnership
Delivering Heritage-led Regeneration

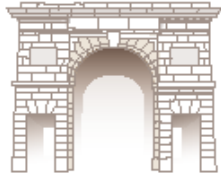
Sources of Information



Publications & Newsletters

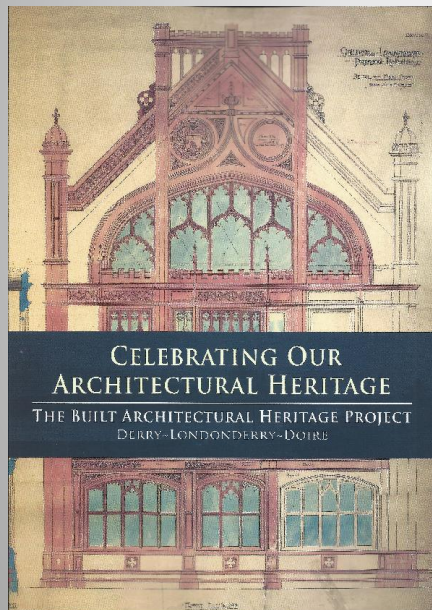
www.foylecivictrust.org



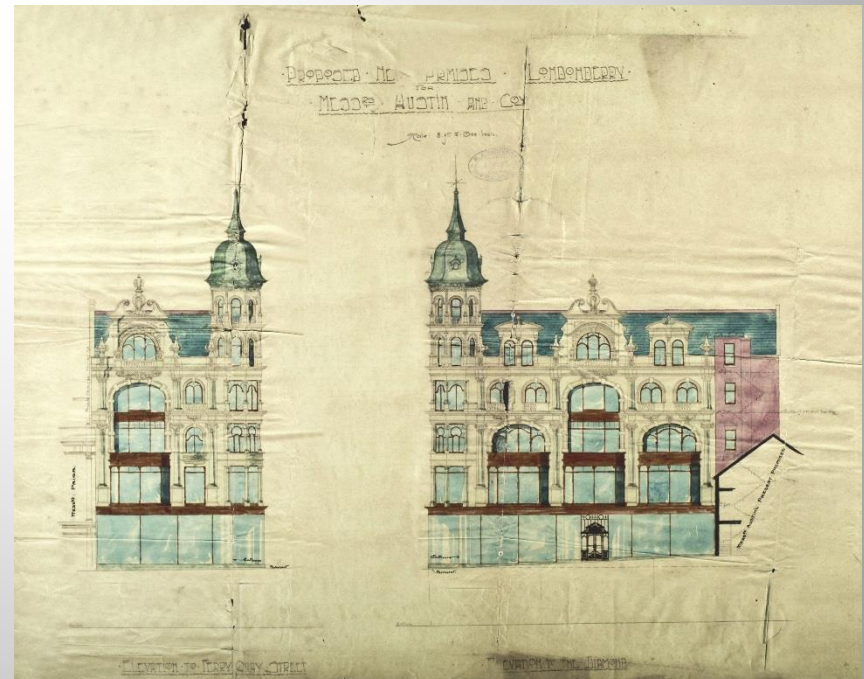


Walled City Partnership
Delivering Heritage-led Regeneration

Sources of Information



www.nwbuiltheritage.com





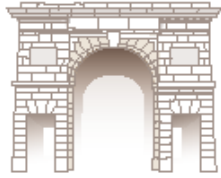
The Former Property Exchange Building





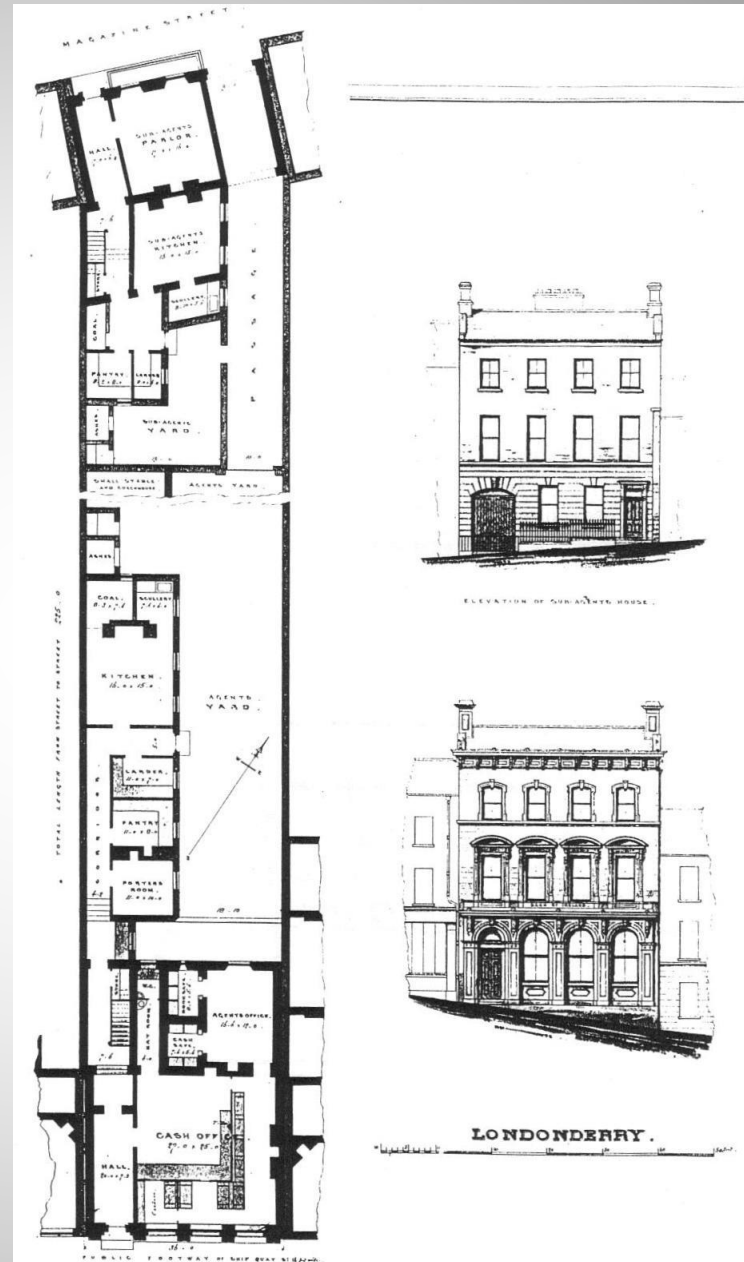
The Former Property Exchange Building





Walled City Partnership
Delivering Heritage-led Regeneration

Former Bank of Ireland 20 Shipquay Street





Former Bank of Ireland 20 Shipquay Street





Former Bank of Ireland
20 Shipquay Street
Stewards
Accommodation





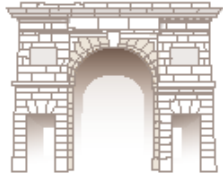
Former Bank of Ireland
20 Shipquay Street
Steward's
Accommodation





Irvine's Printing Works Waterloo Street





Walled City Partnership
Delivering Heritage-led Regeneration

Irvine's Printing Works Waterloo Street

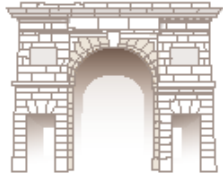




Shipquay Street circa 1889

Provincial Bank 1890
15-17 Shipquay Street





Walled City Partnership
Delivering Heritage-led Regeneration

Osborne & Patton Premises 27 Shipquay Street



Shipquay Street circa 1910



Derry Almanac 1877 & 1889

OSBORNE & PATTON

Beget direct special attention to the undernoted

WINES,

Which have been CAREFULLY SELECTED as to Quality, and offered at such Prices as cannot be surpassed.

Per Dozen.

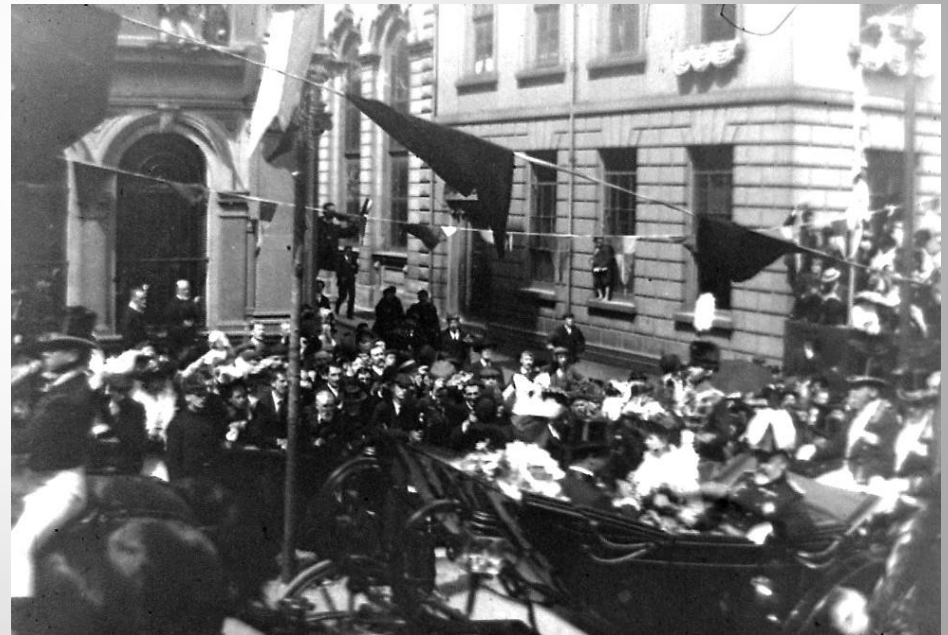
Carlowitz, -	-	25/-, 33/-, 43/-
Saumur Champagne, -	28/-, 33/-, 40/-	
Sauterne, -	-	20/-, 26/-
Light Dinner Sherry, 18/-,	20/-, 24/-	
Sound Claret, -	12/-, 16/-, 20/-	
Marsala, -	-	18/-, 21/-

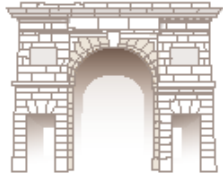
ITALIAN WAREHOUSE,
SHIPQUAY STREET, DERRY.



Shipquay Street 28th July 1903 King Edward VII & Queen Alexandra

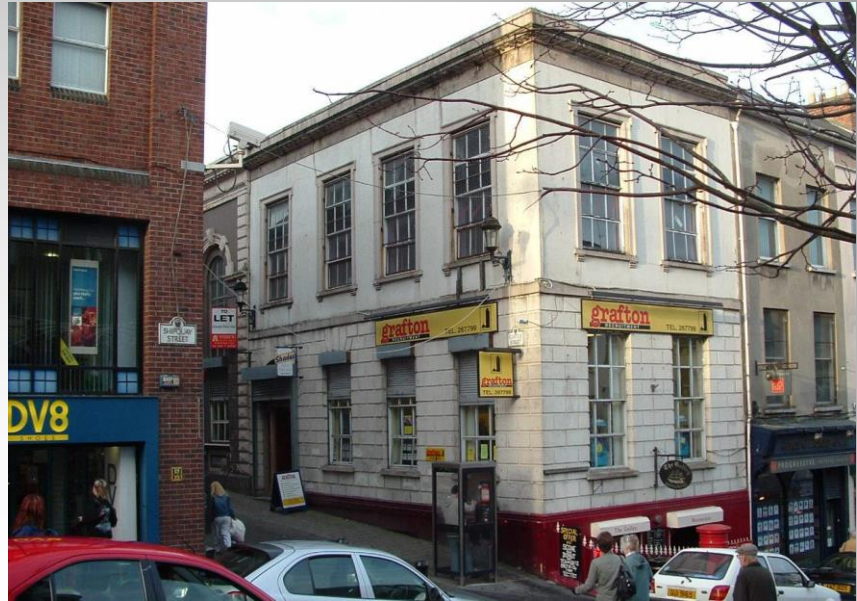
Public Library & Reading Rooms

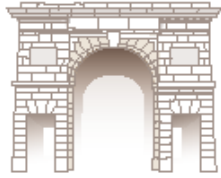




Walled City Partnership
Delivering Heritage-led Regeneration

Public Library & Reading Rooms





Walled City Partnership
Delivering Heritage-led Regeneration

Education Projects St Cecillia's College

An Culturlann Tomorrow's Heritage?



REVIEW THE PAST MAKE WATERLOO STREET LAST

What life was like on Waterloo Street?

by JEANNIE MC LAUGHLIN, AGED 11

In 1925 there was an interesting family that lived at Number 25 Waterloo Street. Someone in the house was from across the border, in Donegal. They must have moved to Donegal for some job opportunities.

James Mc Laughlin was 11 years old and was head of the family. He was a catholic, and he earned a living as a car driver. He could read and write and unfortunately he had no right leg! Maybe he lost it in an accident. He was married to Margaret and they had 5 children, all catholic, but only 2 survived.

Margaret was 51, also a catholic and she earned a living as a house washer - she must have been very busy having a job and at home children. She could also read and write.

There were Patrick (11) and Lisa (10) lived in the house with their parents. They were both single and Patrick was a laborer was able to bring money into the household.

There were 5 daughters so far sure there was a very noisy household. The eldest daughter Maggie, aged 18 and Cecilia, aged 16 were both single, probably because they were on busy working in the factory. They could both read and write so were well educated. Straight, aged 15 and Bernice, aged 14 also worked in the factory with their sisters. They were also single. Bernice was the youngest daughter, aged 14, and she was a school girl learning to read and write.

As if 7 people from the same family living in a 3 story building wasn't crowded enough, there were "boarders" living there too. William (18) was 30 years old and he was a plumber. He was a Church of Ireland parishioner and was born in Banagher, Co. Donegal. He must have moved to Donegal for his job. He was single and strongly enough, similar to James, he had also lost his right leg!

Another boarder was Henry Kelly, a catholic labourer also from Banagher (maybe he was friends with William). He was single too.

For many different people, from different backgrounds working in different jobs, living under the same roof - there would be so much to talk about at dinner time!

St. Cecillia's College
Walled City Partnership
Delivering Heritage-led Regeneration

heritage lottery fund
LOTTERY FUNDED

REVIEW THE PAST MAKE WATERLOO STREET LAST

Waterloo Street:
Past 'V' Present

50's

2015

During the 1920s Waterloo Street was a very different place from what we see today. It was a bustling street filled with many businesses that catered to all age groups. There were grocers, butchers, boot repair shops, split merchants, confectionery shops for children and plenty of offshoots. Compared to now, there are a lot of bars and trendy cafes mainly aimed at adults and we had them left enough to attract families to the street.

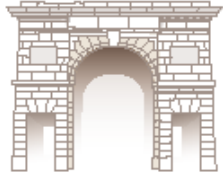
There are no more grocers in the street which suggests that not many people live in the area compared to 50 years ago. Also, most local run grocers would find it hard to compete with nearby big chains such as Primark and Lidl. However, the area is mainly used for commercial purposes - not residential.

As a group, we feel that the Waterloo Street of the past was better than its present state. The street today isn't very family friendly and we feel it could look a lot more appealing. Some of our ideas for the future of Waterloo Street and to make it better are outlined below:

- To welcome new businesses into the unused buildings/garage in the street such as dance studios, more cafes, small shops for children, an independent cinema, a comic book shop or a music shop. This will make it more appealing to people of all ages.
- To build a glass roof over the street to make it more accessible in wet rainy Irish weather!
- To ensure the street is pedestrianised the entire way - no exception for people can walk freely without worry of being hit by a car!
- To encourage more people to live in the second and third floors of the buildings there. This will save space in the street and it will make a better community atmosphere with people coming and going constantly.
- To make the street look more attractive - more windows boxes with flowers, hanging baskets, nice light fixtures along the street, brightly painted buildings, air conditioners on windows and a mixture of old style and modern building designs.

St. Cecillia's College
Walled City Partnership
Delivering Heritage-led Regeneration

heritage lottery fund
LOTTERY FUNDED



Walled City Partnership
Delivering Heritage-led Regeneration

Townscape Heritage Initiative Cannot Deliver in Isolation:

Partnership Is Key to Continued Regeneration:

- DCC/DoE Dereliction Intervention Scheme
- DSD / CCI Restore Scheme
- DSD Public Realm Scheme
- Walled City Townscape Heritage Initiative





Learn More:

Website:

Visit our new website at:

www.walledcitypartnership.com

or

Tour of the THI Area:

We would be happy to facilitate a tour of the THI area for members of the Foyle Family History Society

THANK YOU

Walled City Partnership
Delivering Heritage-led Regeneration

VISIT OUR NEW WEBSITE

We are delighted to announce the launch of our new
Walled City Partnership website:
www.walledcitypartnership.com
Please visit our site and let us know what you think.

Walled City Partnership
13 Magazine Street
Derry-Londonderry
BT48 6HH

t: 028 71 371037
wcp.education@derrycity.gov.uk
www.walledcitypartnership.co.uk

LOTTERY FUNDED CITY FUND CITY CENTRE INITIATIVE DERRY CITY CENTRE INITIATIVE DEPARTMENT OF THE ENVIRONMENT NIEA NORTHERN ISLAND DEVELOPMENT AGENCY SOCIAL DEVELOPMENT HOUSING EXECUTIVE

