

**Walled City Partnership**  
Delivering Heritage-led Regeneration

# **Phase I & II**

## **Target Capital Expenditure**

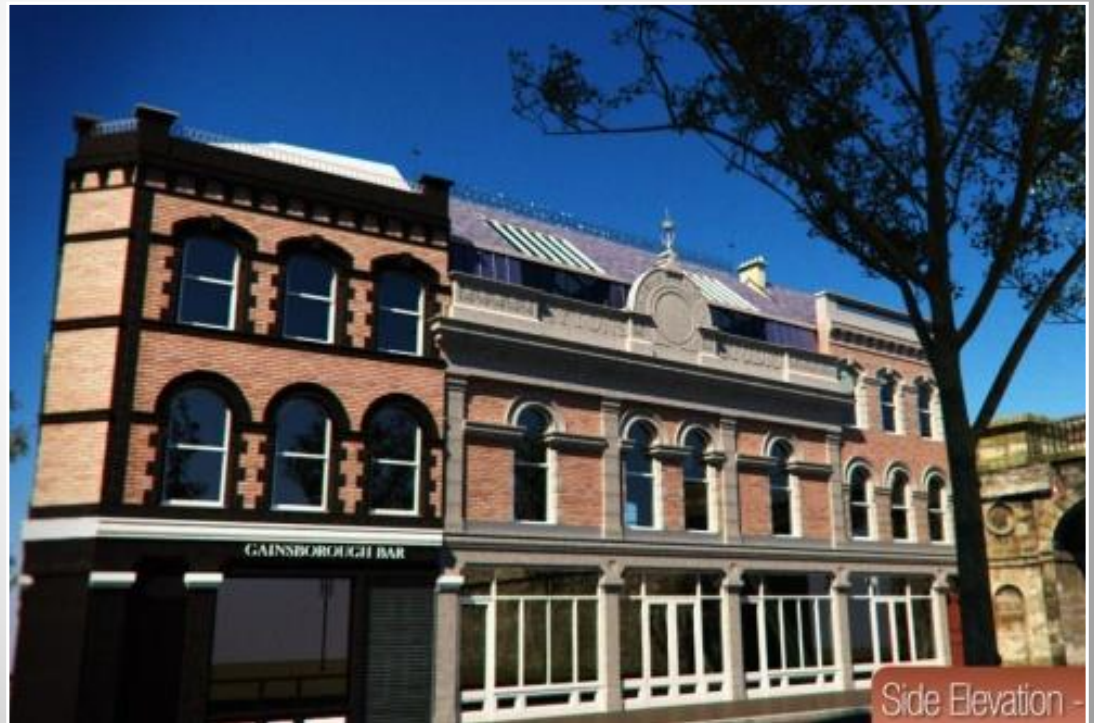
### **Circa £13 Million By March 2018**

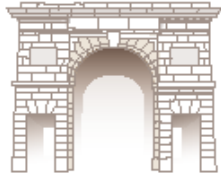
## **Walled City Partnership**

### **Townscape Heritage Initiative**

### **Annual General Meeting**

**1<sup>st</sup> December 2016**





**Walled City Partnership**  
Delivering Heritage-led Regeneration

## Phase I Delivery

**2002 – 2010**

**£4.48 million**

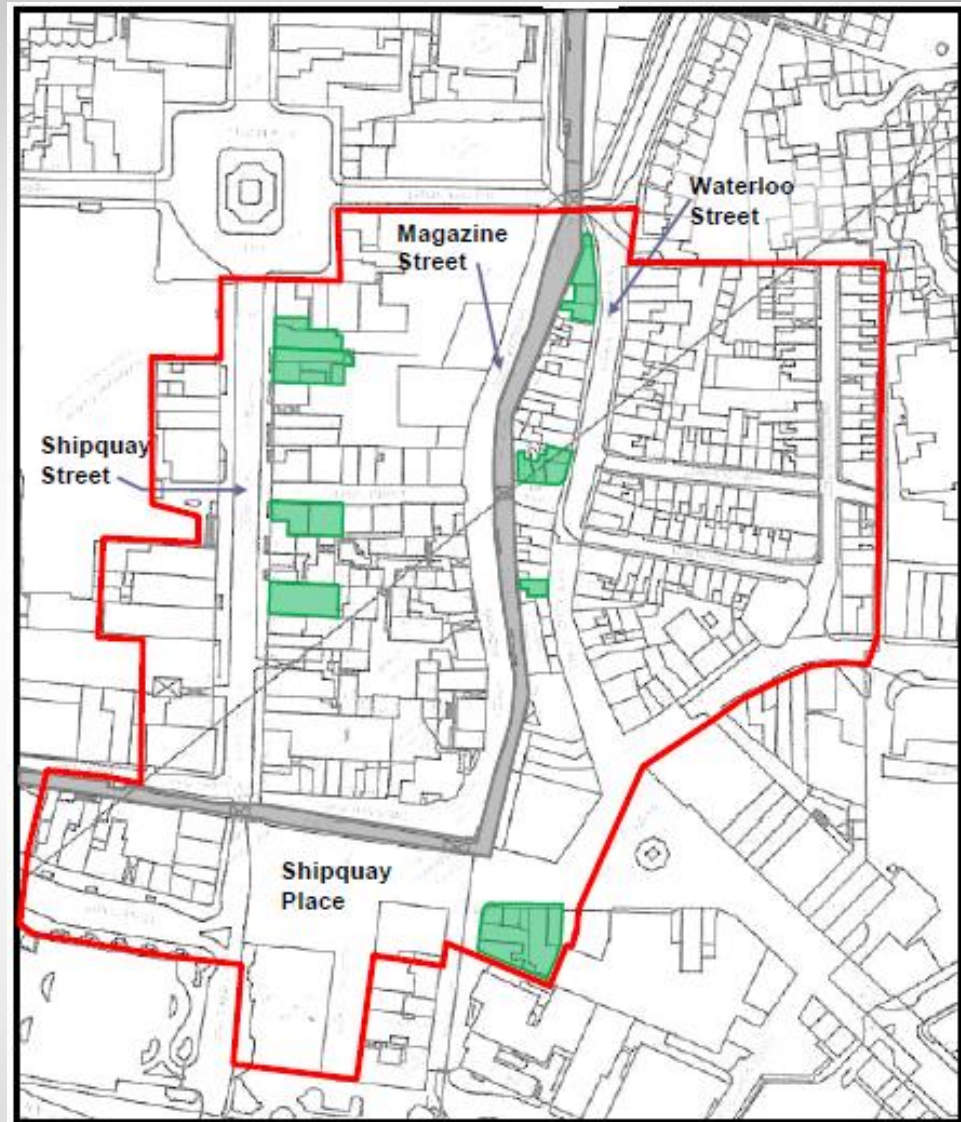
**Investment in THI Area**

Outputs:

19 Retail Units

22 Apartments

1,400 m<sup>2</sup> Office  
Accommodation



Key to Properties:



Completed Phase I





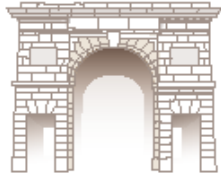
## Phase I Delivery

Capital Project Costs: £4,479,265  
Common Fund Grant: £2,325,642  
Partnership Funding: £1,349,128  
HLF Grant: £976,514

HLF % Common Fund: 41.99%

**2002 – 2010**  
**£4.5 Million Investment in**  
**THI Area**  
Core Costs DCC





**Walled City Partnership**  
Delivering Heritage-led Regeneration

## Phase II Delivery

**2010 - 2016**

**£3.85 Million Investment  
in THI Area**

Outputs:

13 Retail Units

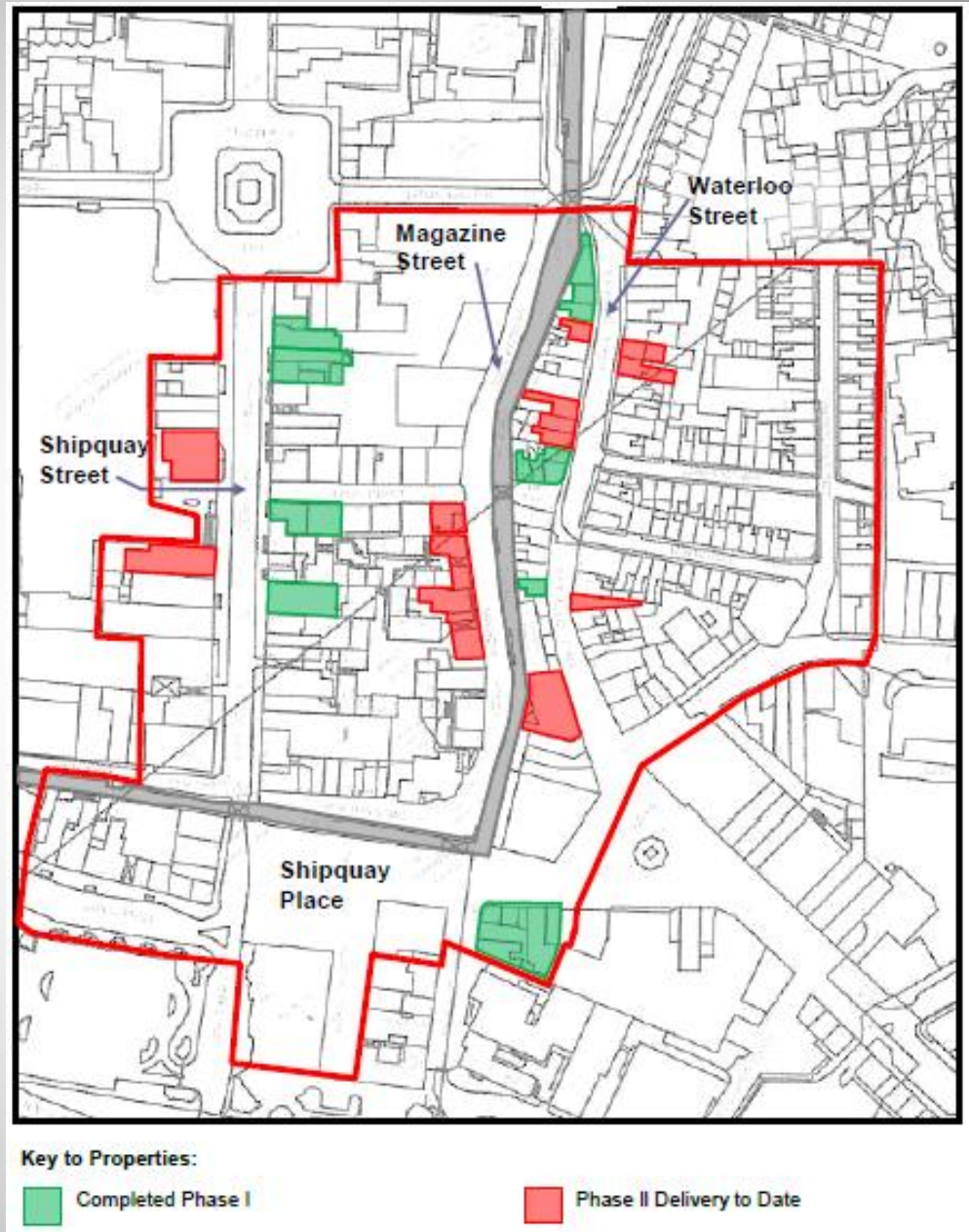
25 Apartments

Dance Studio

Restaurant

Boutique Hotel

Office Accommodation







## Phase II Delivery

**Capital Project Costs: £3,853,769**

**Common Fund Grant: £1,613,255**

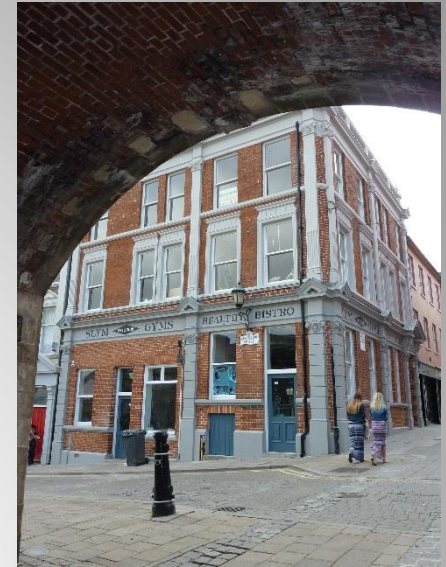
**Partnership Funding: £779,302**

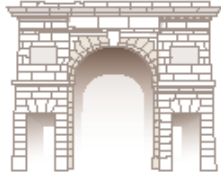
**HLF Grant: £833,953**

**HLF % Common Fund: 51.66%**

**Core Costs: DC&SDC £264,424**

**Total Phase I & II  
Capital  
Investment to Date  
£8,330,034**

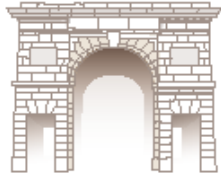




**Walled City Partnership**  
Delivering Heritage-led Regeneration

# Phase II Delivery Year 1 to 6 HLF Expenditure Grant Balance

	Capital Works Budget:	Staff, OH&E, Complementary Initiatives Budget:
Original Award	£1,551,000.00	£118,000.00
Expenditure / awards up to 1 <sup>st</sup> December 2016	£838,033.40	£105,322.65
<b>HLF Grant balance per Category</b>	<b>£712,966.60</b>	<b>£12,677.35</b>
<b>Total HLF Grant Balance 1<sup>st</sup> December 2016</b>	<b>£725,643.95</b>	



**Walled City Partnership**  
Delivering Heritage-led Regeneration

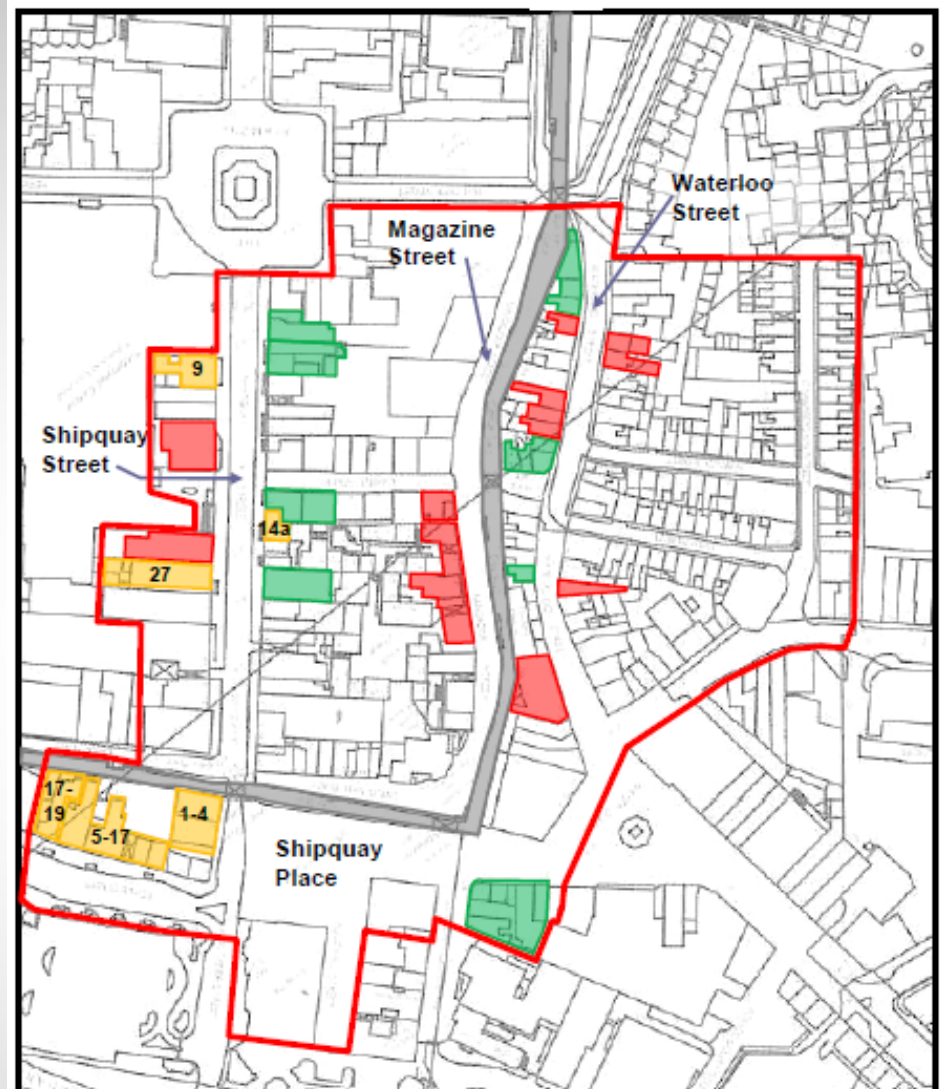
## Phase II Closure March 2018

**Target to Deliver up to 5  
Projects**


**Projected Phase II  
Expenditure**


Capital Project Costs:	£8,748,916
Common Fund Grant:	£3,323,175
Partnership Funding:	£1,589,302
HLF Grant:	£1,517,050


**HLF % Common Fund: 45.65 %**  
**Core Costs DC&SDC**



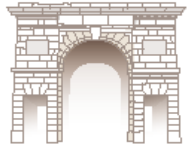
**Key to Properties:**

 Completed Phase I

 Phase II Target Closure Projects

 Phase II Delivery to Date



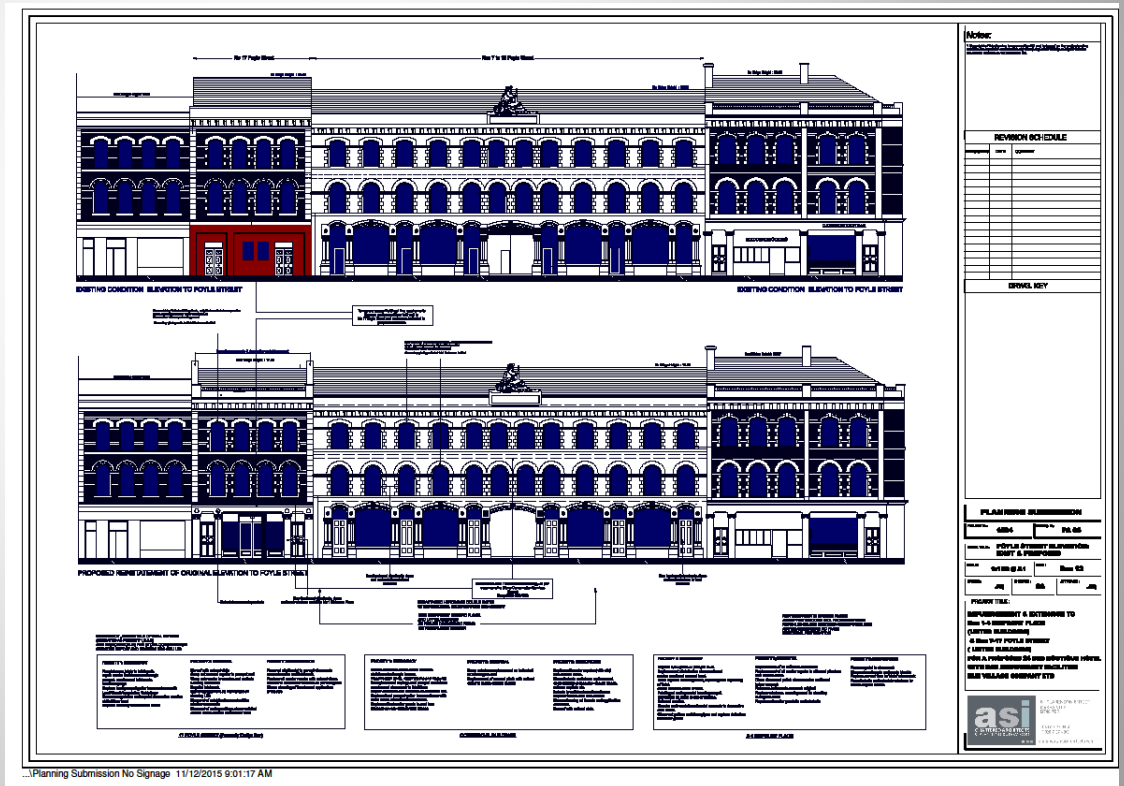


**Walled City Partnership**  
Delivering Heritage-led Regeneration

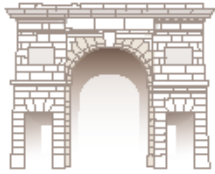
# Q01 Foyle Street & Shipquay Place

**Applicant: G O'Doherty  
Elm Village Company Ltd**

**Architect: ASI Architects**



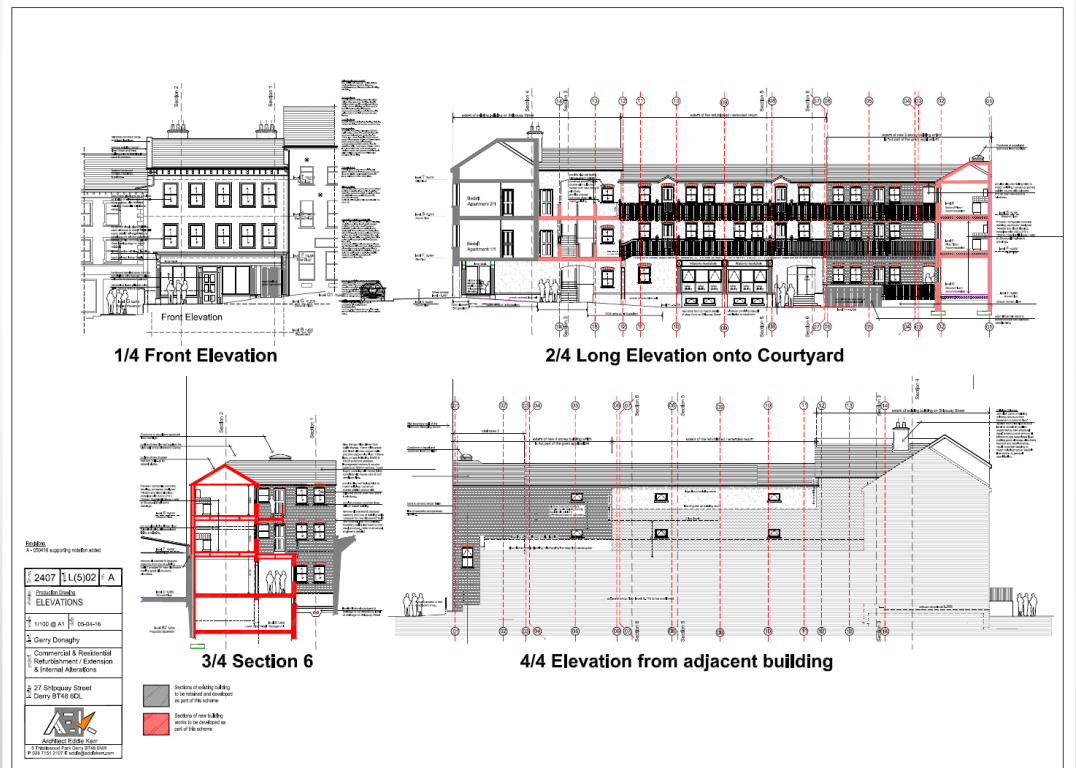




**Walled City Partnership**  
Delivering Heritage-led Regeneration

**Q06**

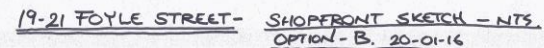
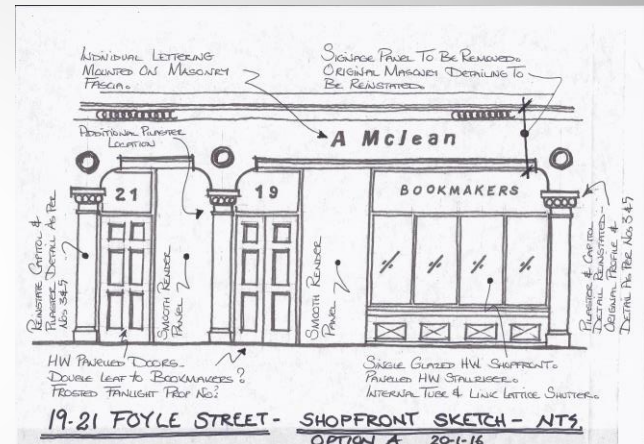
**27 Shipquay Street**  
**Applicant: Gerry Donaghy**  
**Architect: Eddie Kerr**





# 19-21 Foyle street

**Applicant: McLean Bookmakers**  
**Architect: D Taggart & Associates**





# Q13

## 14a Shipquay Street

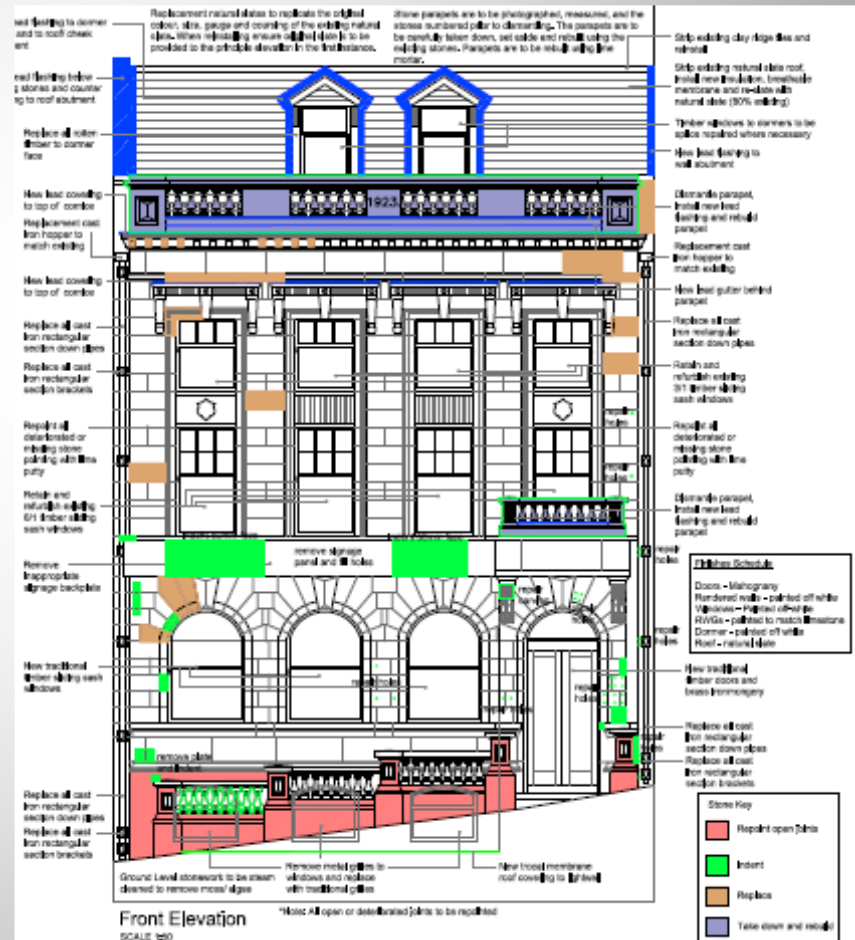
Applicant: Inner City Trust  
Architect: Mullarkey Pedersen







## Q39



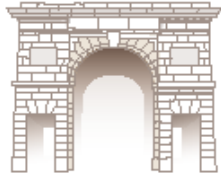


## Phase II

# Closure Programme

## THI Completion by March 2018

[illegible]



**Walled City Partnership**  
Delivering Heritage-led Regeneration

## Education Initiatives

### Legacy Publication

Liam Campbell  
Presentation

**Events:**  
UAHS – “Your Heritage Your Voice”  
Council – “Building Limes Forum Ireland”  
HLF Committee NI

**Presentations:**  
Foyle Family History Society  
University of the Third Age  
Carrickfergus THI launch

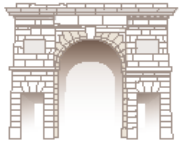
**Applications:**  
National Lottery Good Causes  
Association of Public Sector Excellence



#### New Life : Old Streets

Townscape Heritage Initiative  
Walled City Partnership AGM 1<sup>st</sup> Dec. 2016

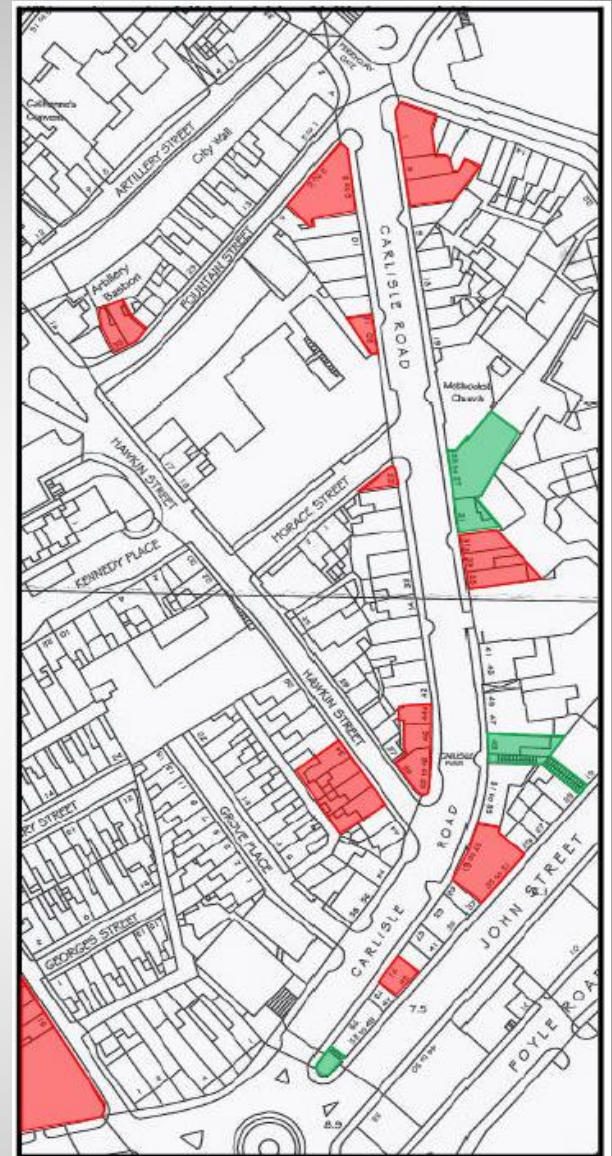




**Walled City Partnership**  
Delivering Heritage-led Regeneration

# **Phase III Townscape Heritage Opportunity Stage I Application August 2017**

## **Historic City CA Carlisle Road Scoping Study**



**Carlisle Road  
Potential THI Property Inclusion**





# Phase III Townscape Heritage Opportunity Stage I Application August 2017

## Historic City CA Cathedral Quarter Scoping Study



**Cathedral Quarter  
Potential THI Property Inclusion**



## **Walled City Partnership**

**Participation in  
Council Led  
Regeneration Activities**

**Thank You  
Ronan O'Donnell  
Project Officer**

**Historic City CA**  
Decorative Enhancement Scheme

**Newtownstewart**  
Shopfront Enhancement Scheme

**Bishop Street Car Park**  
Enhancement Scheme

**Historic Environment Fund**  
District Council  
Maintenance Week Catalyst